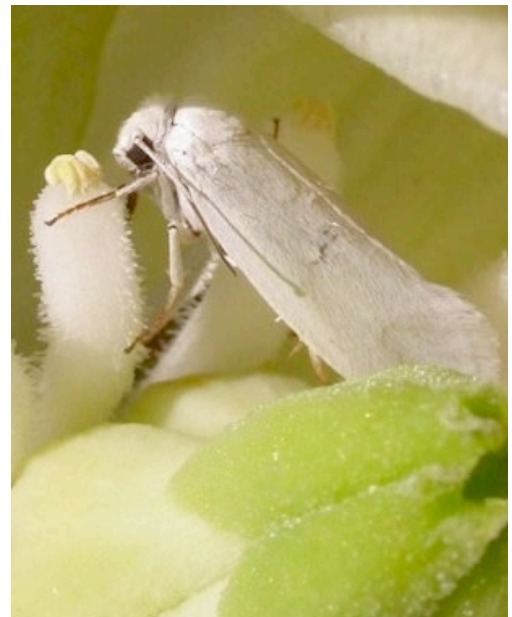




# Untangling the entangled bank: direct and indirect effects of antagonism on mutualism

**Kari Segraves**  
**Department of Biology**  
**Syracuse University**

*Mutualisms are interspecific interactions where both species benefit from participating in the association, and are thought to be important in the promotion and maintenance of biodiversity. Using the yucca/yucca moth mutualism as an example, I will suggest the local community plays a role in constraining the evolution of mutualistic traits.*



**Monday, October 25, 2010**  
**5:00 PM in Lecture Hall 2**

**Fall 2010 EvoS Seminar Series**  
**[evolution.binghamton.edu/segraves](http://evolution.binghamton.edu/segraves)**